

Indian Pesticide Limited (IPL)-old picture



Indian Pesticide Limited (IPL)-old picture



Muck yard behind IPL-old picture



Drainage behind IPL-old picture



My PhD supervisor with farmers and Dr Om Prakash at dumping site Ummri village-old picture



Prof Rup Lal doing field work at dumping site Ummri village-old picture



Dr Hansi (Student of Prof Rup) collecting soil sample from dump site (Pit of brick kiln filled with HCH muck) at Ummari village-old picture



Now the factory people make this dumping site empty and transfer muck in the slop of over bridge at matiyari chauraha, Lucknow

My PhD supervisor with farmers at rice field near dumping site of Ummri village-old picture



The old dumping site in brick kiln at Ummari village was made empty and Illegally dumped in the slop of Over-bridge at Matiyari Chauraha, Lucknow and road was constructed over it-New picture



The old dumping site in brick kiln at Ummari village was made empty and Illegally dumped in the slop of Over-bridge at Matiyari Chauraha, Lucknow and road was constructed over it-New picture



Illegal dumping of HCH muck at Road side near IPL- New picture



Illegal dumping of HCH muck at Road side near IPL- New picture



A school on dumped ground at Mati village-New picture



A school on dumped ground at Mati village-New picture



A school on dumped ground at Mati village-New picture



Boundary of school on dumped ground at Mati village-New picture





Farmer making plot for bioremediation near Dumping site at Ummari village-New picture



Farmer House near Dumping site at Ummari village-New picture



Farmer House near Dumping site at Ummari village-New picture



Field near Dumping site at Ummari village-New picture

Back of the farmer house and empty Dumping site at Ummari village-New picture



Back of the farmer house at Ummari village-New picture



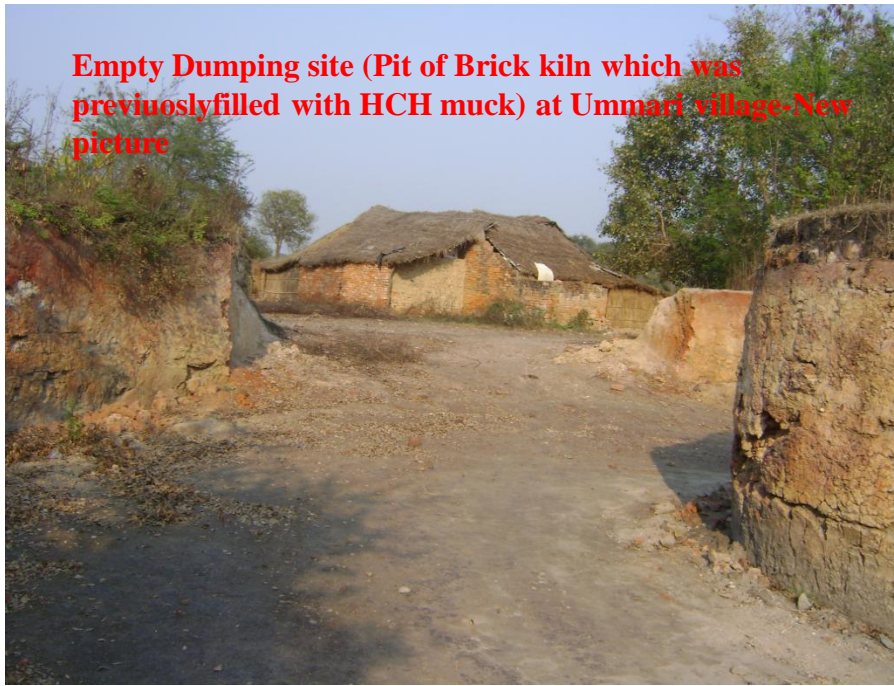
Empty Dumping site at Ummari village-New picture



Empty Dumping site at Ummari village-New picture



Empty Dumping site (Pit of Brick kiln which was previously filled with HCH muck) at Ummari village-New picture



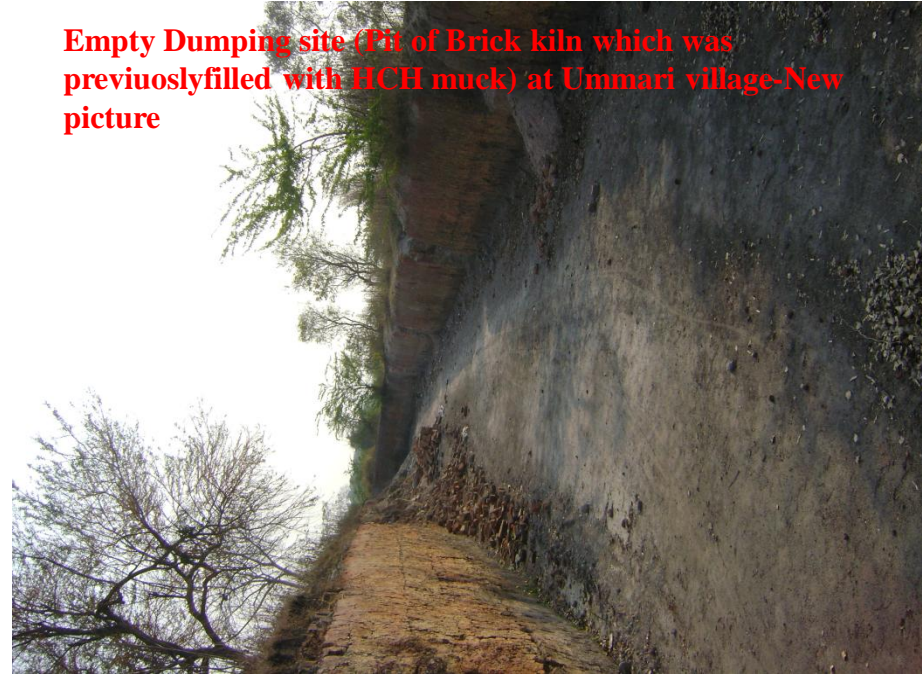
Empty Dumping site (Pit of Brick kiln which was previously filled with HCH muck) at Ummari village-New picture



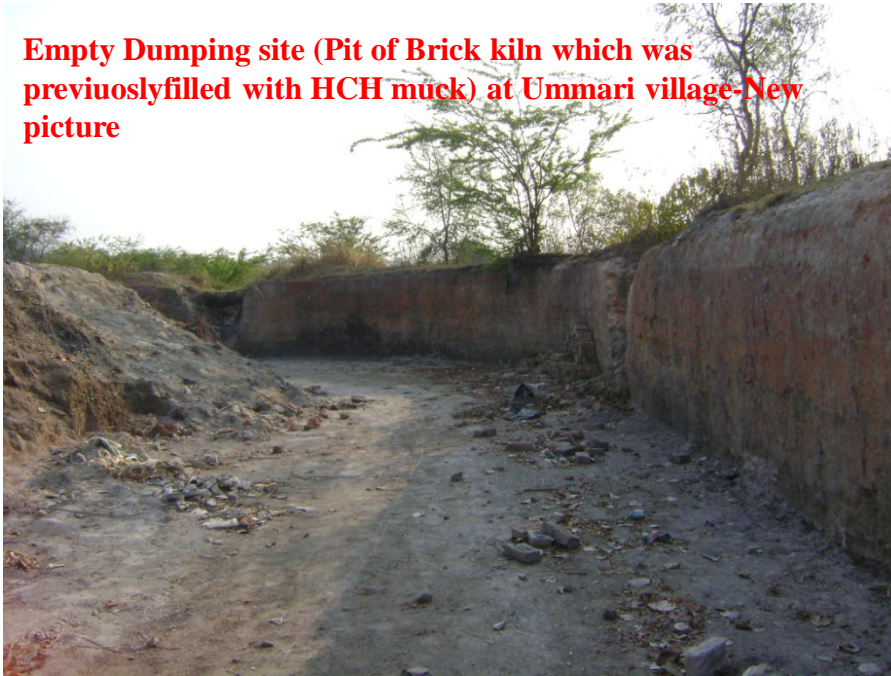
Empty Dumping site (Pit of Brick kiln which was previously filled with HCH muck) at Ummari village-New picture



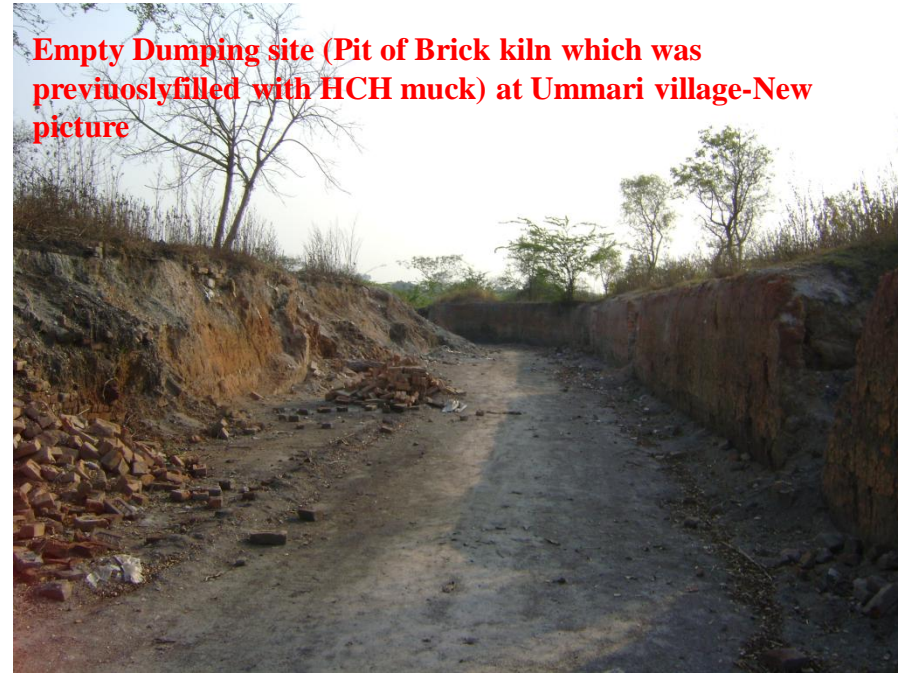
Empty Dumping site (Pit of Brick kiln which was previously filled with HCH muck) at Ummari village-New picture



Empty Dumping site (Pit of Brick kiln which was previously filled with HCH muck) at Ummari village-New picture



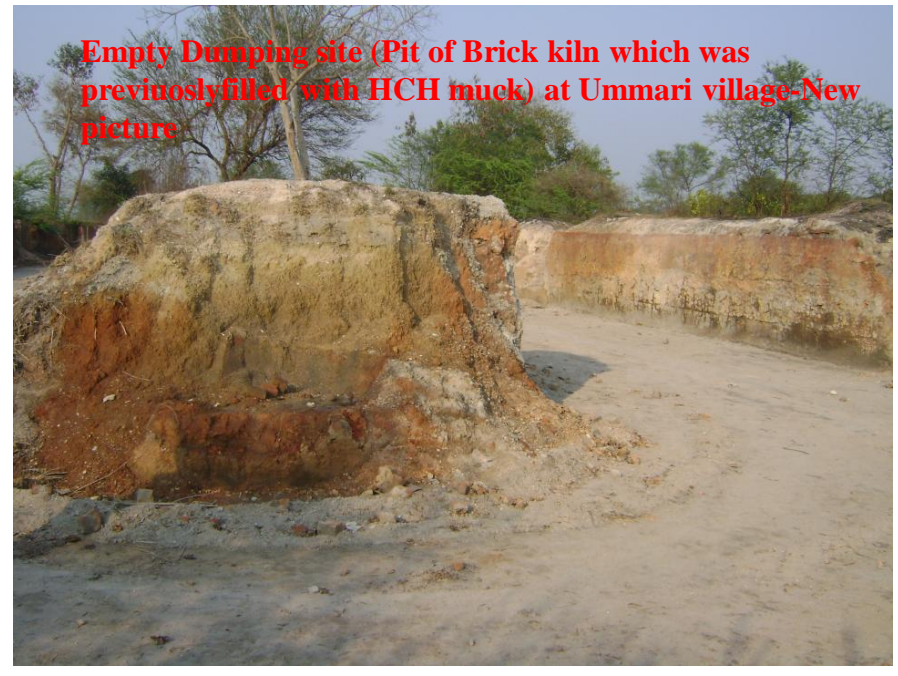
Empty Dumping site (Pit of Brick kiln which was previously filled with HCH muck) at Ummari village-New picture



Empty Dumping site (Pit of Brick kiln which was previously filled with HCH muck) at Ummari village-New picture



Empty Dumping site (Pit of Brick kiln which was previously filled with HCH muck) at Ummari village-New picture



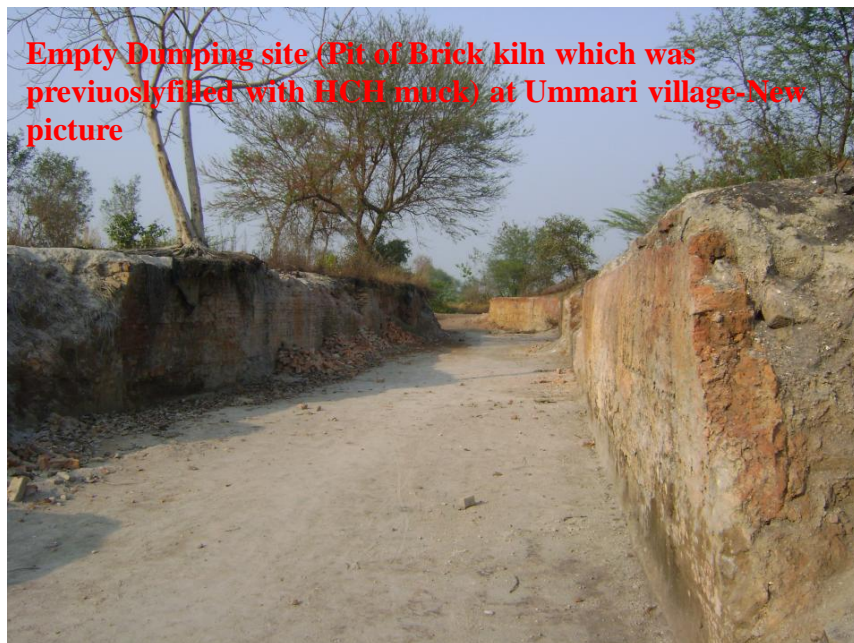
Empty Dumping site (Pit of Brick kiln which was previously filled with HCH muck) at Ummari village-New picture



Empty Dumping site (Pit of Brick kiln which was previously filled with HCH muck) at Ummari village-New picture



Empty Dumping site (Pit of Brick kiln which was previously filled with HCH muck) at Ummari village-New picture



Empty Dumping site (Pit of Brick kiln which was previously filled with HCH muck) at Ummari village-New picture



Layering of ash of rice husk and HCH muck in Brick kiln at Ummari village-New picture



Open dumping site near Brick kiln and spreading of HCH muck at Ummari village-New picture



Open dumping site near Brick kiln and spreading of HCH muck at Ummari village-New picture



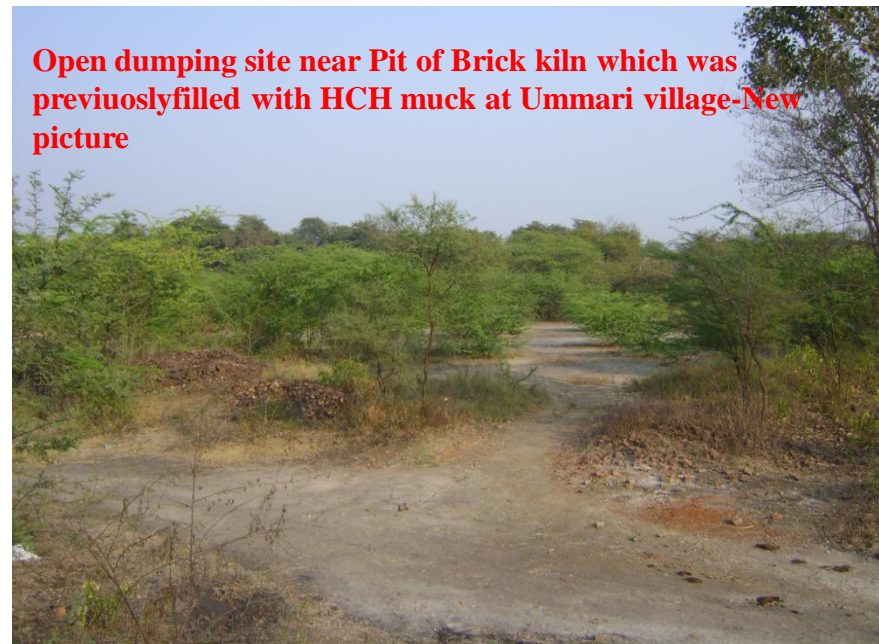
Open dumping site near Brick kiln and spreading of HCH muck at Ummari village-New picture



Open dumping site near Brick kiln at Ummari village-New picture



Open dumping site near Pit of Brick kiln which was previously filled with HCH muck at Ummari village-New picture



Local farmers dig HCH muck and using it in their field at Ummari village-New picture



Local farmers dig HCH muck and using it in their field at Ummari village-New picture



Farmer's House near unmping site at Ummari village-New picture



Local farmers dig HCH muck and using it in their field at Ummari village-New picture



Cattle roaming near dumping site at Ummari village-New picture



Way for dumping site at Ummari village-New picture



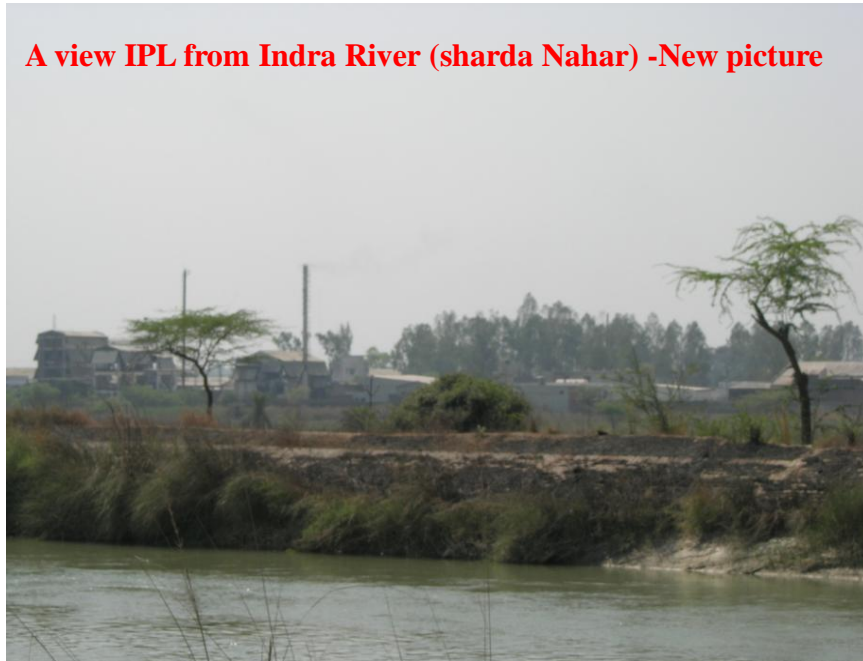
Indra River (sharda Nahar) about 0.5 Km from IPL -New picture



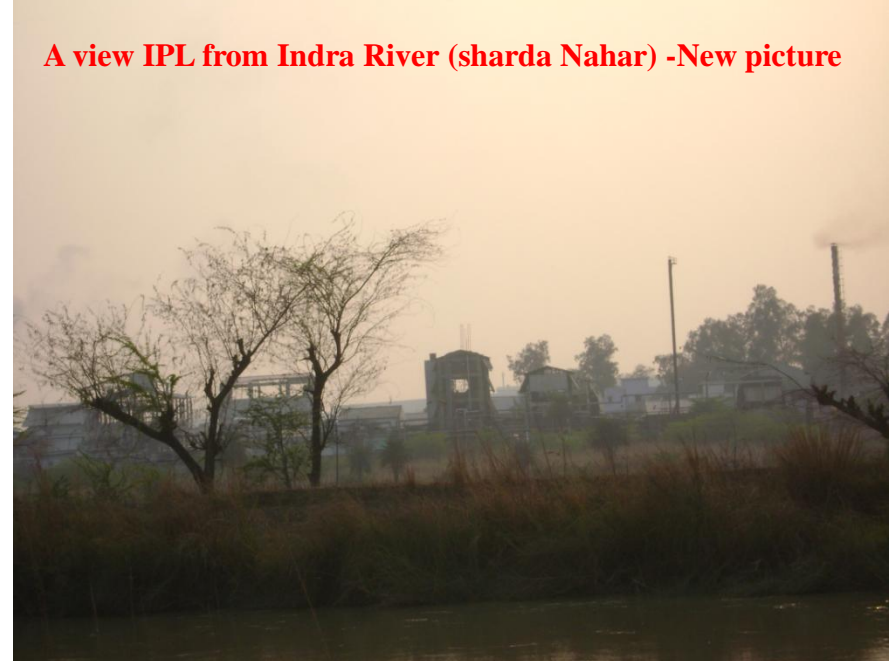
A view IPL from Indra River (sharda Nahar) -New picture



A view IPL from Indra River (sharda Nahar) -New picture



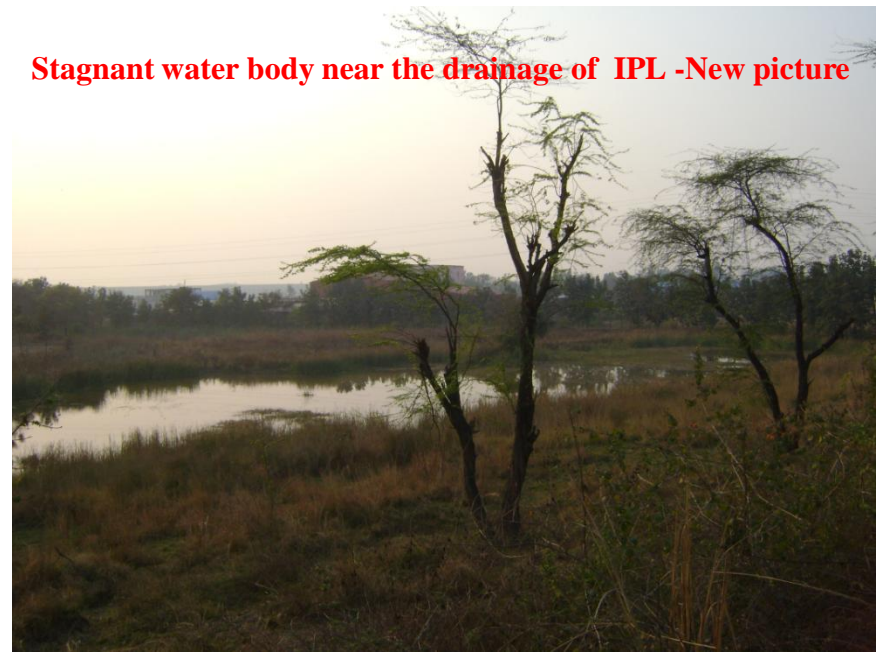
A view IPL from Indra River (sharda Nahar) -New picture



Stagnant water body near the drainage of IPL -New picture



Stagnant water body near the drainage of IPL -New picture



A view from back side of IPL -New picture



A view from back side of IPL -New picture



**Another unit of IPL in front of main production unit
-New picture**



**Another unit of IPL in front of main production unit
-New picture**



Drainage of IPL -New picture



Drainage of IPL -New picture

